



Eurodac 2021 Statistics

June 2022



European Union Agency for the Operational Management of Large-Scale IT
Systems in the Area of Freedom, Security and Justice

www.eulisa.europa.eu

Contents

Contents	2
Eurodac 2021 at a glance	3
Introduction	4
1. Data transmitted to Eurodac	6
2. Hits generated	12
3. Annexes	18

Eurodac 2021 at a glance¹



+30% System usage
compared to 2020

Deletion of around **350k**
data sets from the United Kingdom



Over **850k** data sets
transmitted to the Central System

610,298
Total number of hits



¹ Comma (,) is used as thousand separator in this document.

Introduction

The European Dactyloscopy Database (Eurodac) is the large-scale IT system used in the EU for managing asylum applications within the EU+². The system allows fingerprint comparison and storage, and therefore, supports the effective implementation of Regulation (EU) No 604/2013, in determining the Member State³ responsible for examining an application for international protection lodged in one of the Member States.

The Eurodac annual statistics report 2021 presents a detailed compilation of the data in the different Eurodac categories. The document provides information on data stored in the system, and also on the different transactions carried out during the year by Member State asylum authorities and authorised law enforcement authorities, as well as by Europol.

Annual statistics of Eurodac are produced according to Article 8(2) of Regulation (EU) No 603/2013 (the Eurodac Regulation). As per that Article, eu-LISA publishes the annual report on the activities of the Eurodac Central System, including its technical functioning and security, available, as all eu-LISA reports, on the Agency's website⁴.

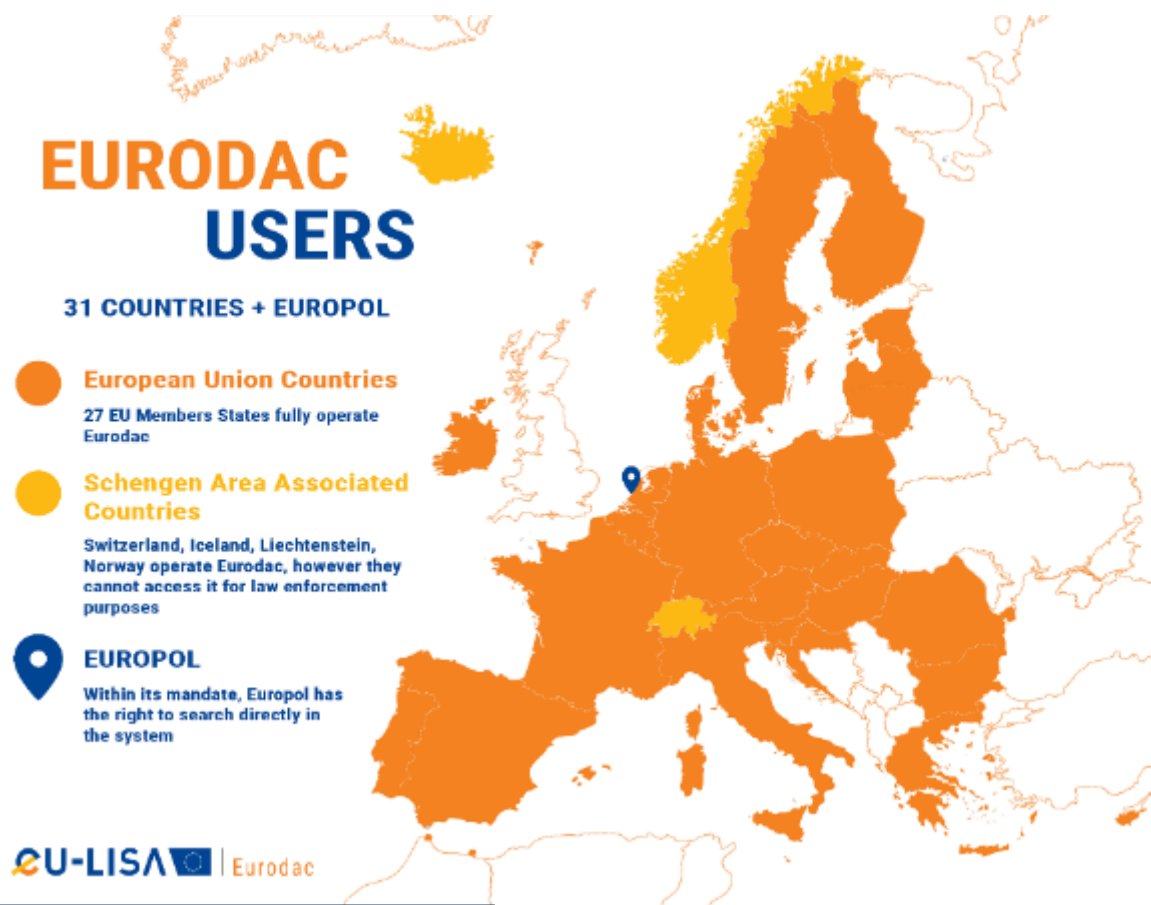


Figure 1: Eurodac users as at December 2021

² The EU and the Schengen Associated Countries.

³ Under the term 'Member States', the current document refers to the Member States of the European Union (EU) and Schengen Associated Countries that were bound under Union law by Regulation (EU) No 603/2013 until 31 December 2021, if not specified otherwise. Those were Austria, Belgium, Bulgaria, Cyprus, Croatia, Czechia, Denmark, Estonia, Finland, France, Germany, Greece, Hungary, Ireland, Italy, Latvia, Lithuania, Luxembourg, Malta, the Netherlands, Poland, Portugal, Romania, Slovakia, Slovenia, Spain and Sweden; as well as Iceland, Liechtenstein, Norway and Switzerland.

⁴ All publications are available at <https://eulisa.europa.eu/>



1

TRANSACTIONS TO EURODAC

1. Data transmitted to Eurodac

During 2021, a total of **855,478 fingerprint data sets** were transmitted to Eurodac. This was an increase of more than 30% compared to the previous year.

After the record level of almost 2 million transactions in 2015, annual Eurodac traffic fell considerably in the following years and from 2018 it reached a level below 1 million annual transactions. The volume of data transmitted over the last few years has followed quite a stable pattern, although a sharp drop was observed in 2020 when system usage fell by 33% compared to 2019. This was a direct consequence of the measures banning movement imposed in Europe during the COVID-19 pandemic.

Nonetheless, and despite the fact that COVID-19 still had an impact on transactions in 2021, average usage has now almost completely recovered from the drop seen in 2020.

Together with the COVID-19 effects, the second factor influencing the transmission of data to the Central System in 2021 was the Withdrawal Agreement of the United Kingdom from the EU, which entered in force on 1 January 2021. As result of the Withdrawal Agreement, the United Kingdom was disconnected from Eurodac Central System from 1 January 2021, and all its records were deleted. This resulted in around 350,000 fewer data sets being stored in Eurodac at the beginning of 2021 than at the end of 2020.

The graph below represents the trend of Eurodac traffic over the last 6 years.

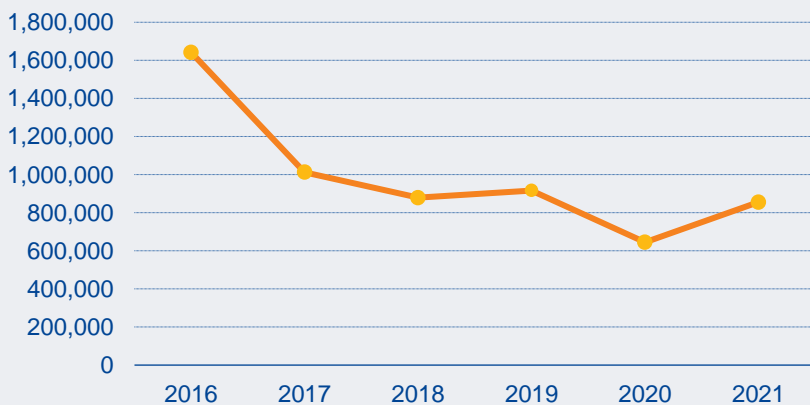
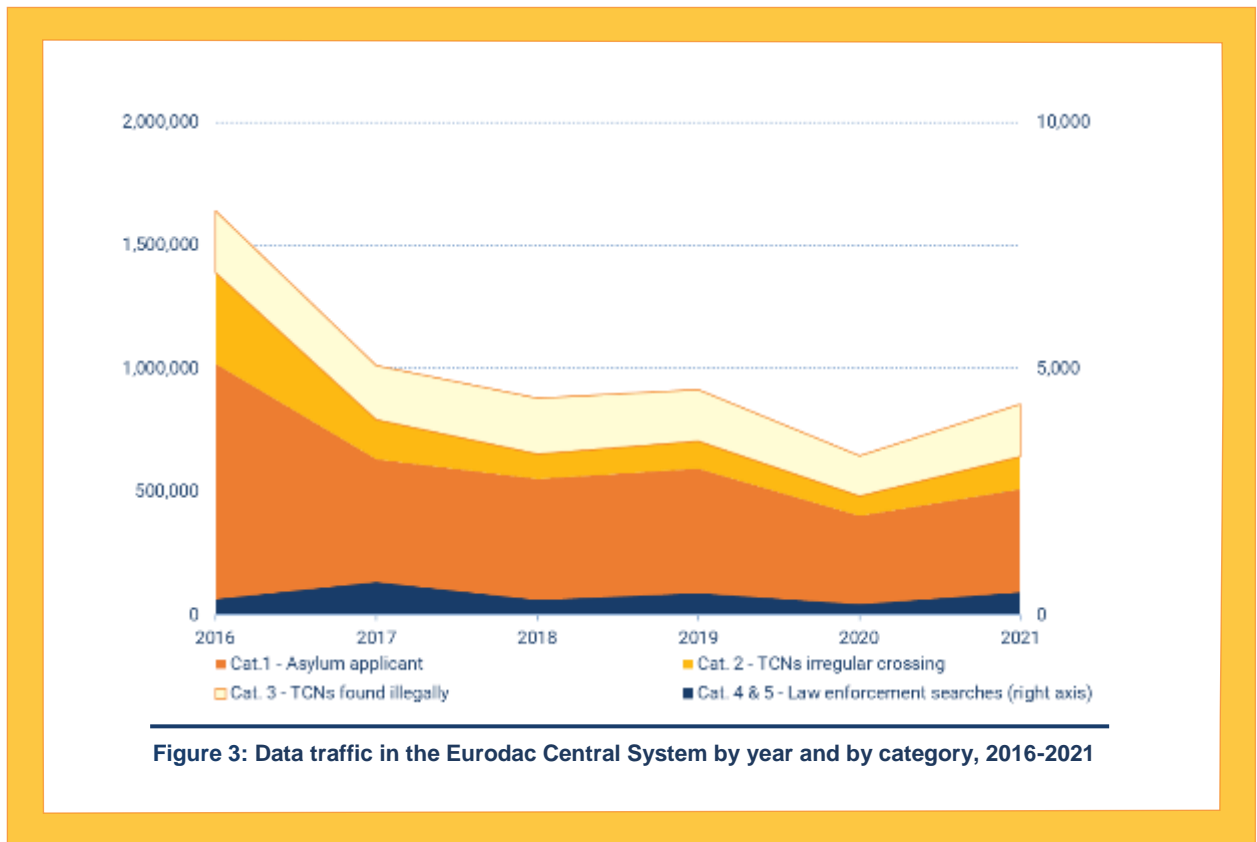


Figure 2: Annual data transmitted to the Eurodac Central System, 2016-2021

In 2021, there was also an increase in the amount of data transmitted in each main category versus 2020, as shown in the graph on the next page.



Compared to 2020, the highest increase was registered in Categories 4 and 5 with 124% more traffic, followed by Category 2 (increase of 61%) and Category 3 (32% more traffic than in 2020). The category which grew least was the one corresponding to asylum applicants (Category 1), whose share increased by 27% compared to the previous year.

The main categories of data transmitted to Eurodac are:



Category 1: fingerprint data sets of third-country nationals (TCNs) or stateless persons, aged 14 or older, who register an application for international protection (asylum) in a Member State.

In 2021, 510,696 data sets transmitted were in this category.



Category 2: fingerprint data sets of third-country nationals or stateless persons, aged 14 or older, apprehended when irregularly crossing the external borders.

In 2021, 132,356 data sets transmitted were in this category.



Category 3: searches of fingerprint data sets of third-country nationals or stateless persons, aged 14 or older, found staying illegally within the territory of a Member State.

In 2021, 211,960 fingerprint data set searches were reported.



Category 4: searches by designated law enforcement authorities of Member States, under a regulated procedure, for the purpose of comparing fingerprint data sets.

In 2021, **446 searches** were performed under this category.



Category 5: requests by Europol for comparison of fingerprint data sets against the Central System data⁵.

In 2021, **20 searches** were run under this category.

Out of the total of fingerprint data sets transmitted during 2021, the largest shares were in Category 1 and Category 3 as shown in the graph below.

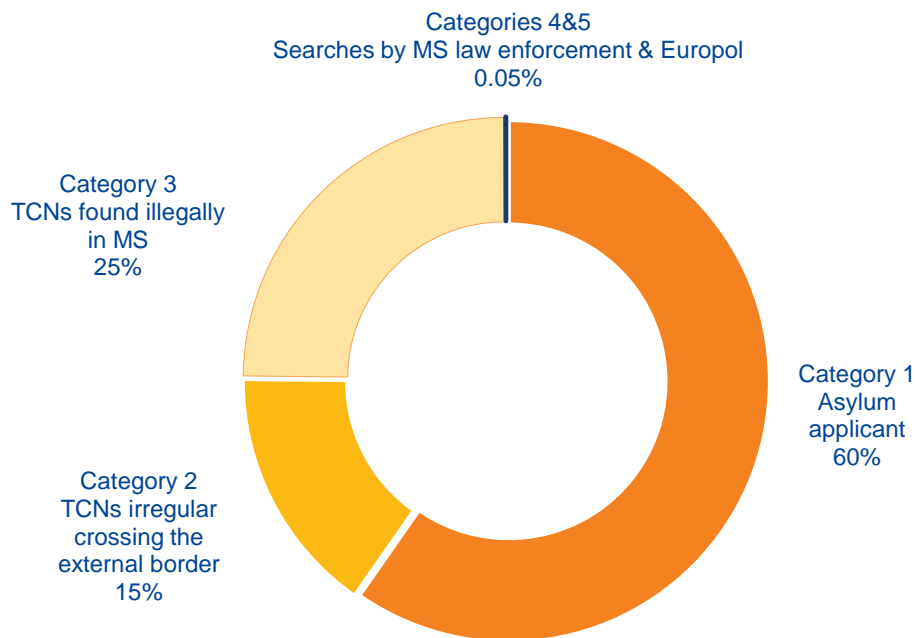


Figure 4: Data transmitted to the Eurodac Central System by category in 2021

⁵ Europol relies on the Dutch connection and infrastructure to transmit data to Eurodac, in line with Article 19 of the Eurodac Regulation and in agreement with the Dutch authorities.

The map below and that on the next page show the share of data transmitted to the Eurodac Central System per Member State in 2021. The first map relates to Category 1 transactions and the second one, to Category 2 transactions.

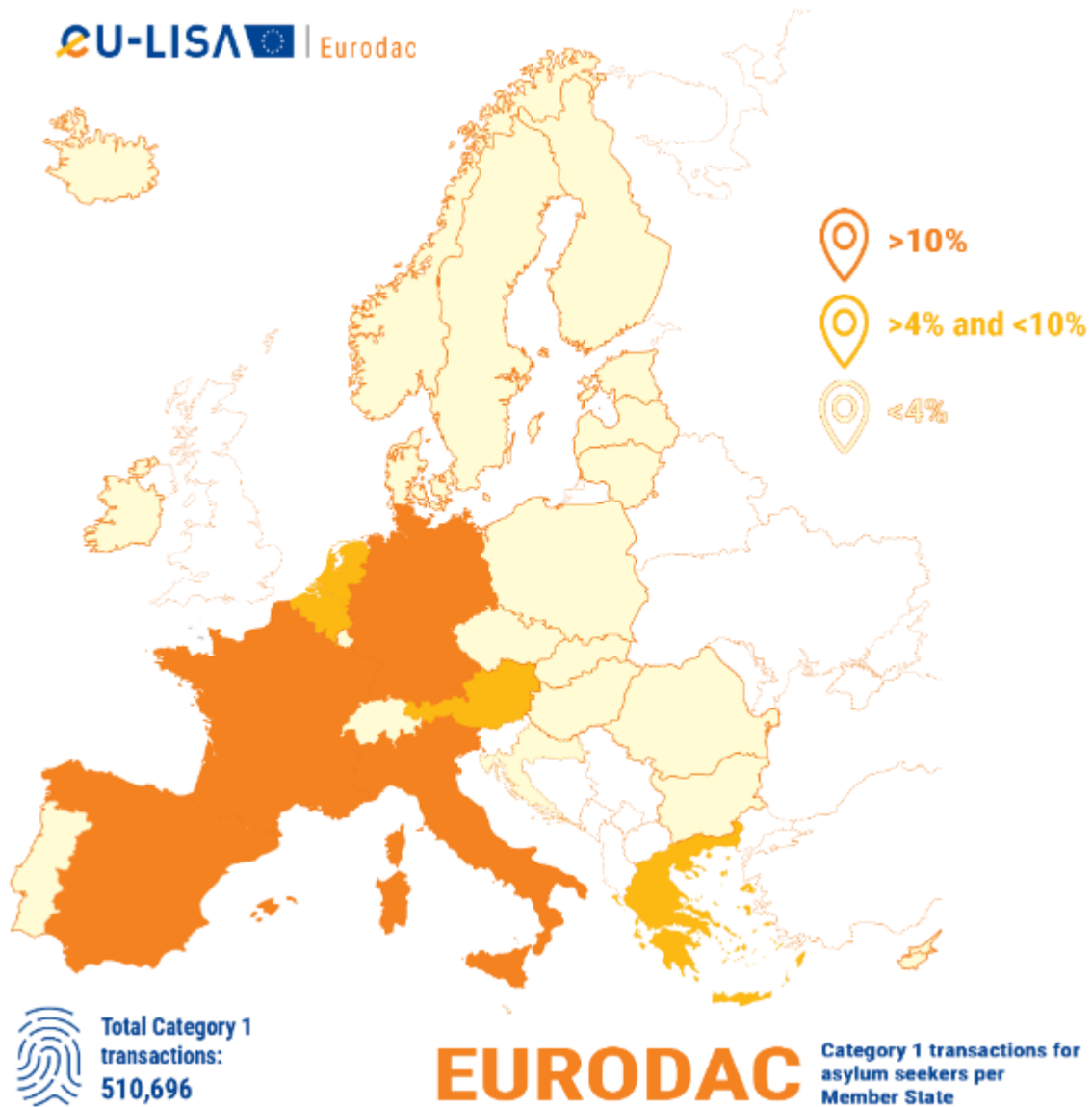


Figure 5: Category 1 – Asylum seekers transactions per Member State in 2021

Member States accounting for the highest number of Category 1 transactions were Germany (24%), followed by France and Italy (19% and 11% respectively). Results are similar to the previous year when Germany, France and Spain registered the highest volume of Category 1 data sent to the Central System.

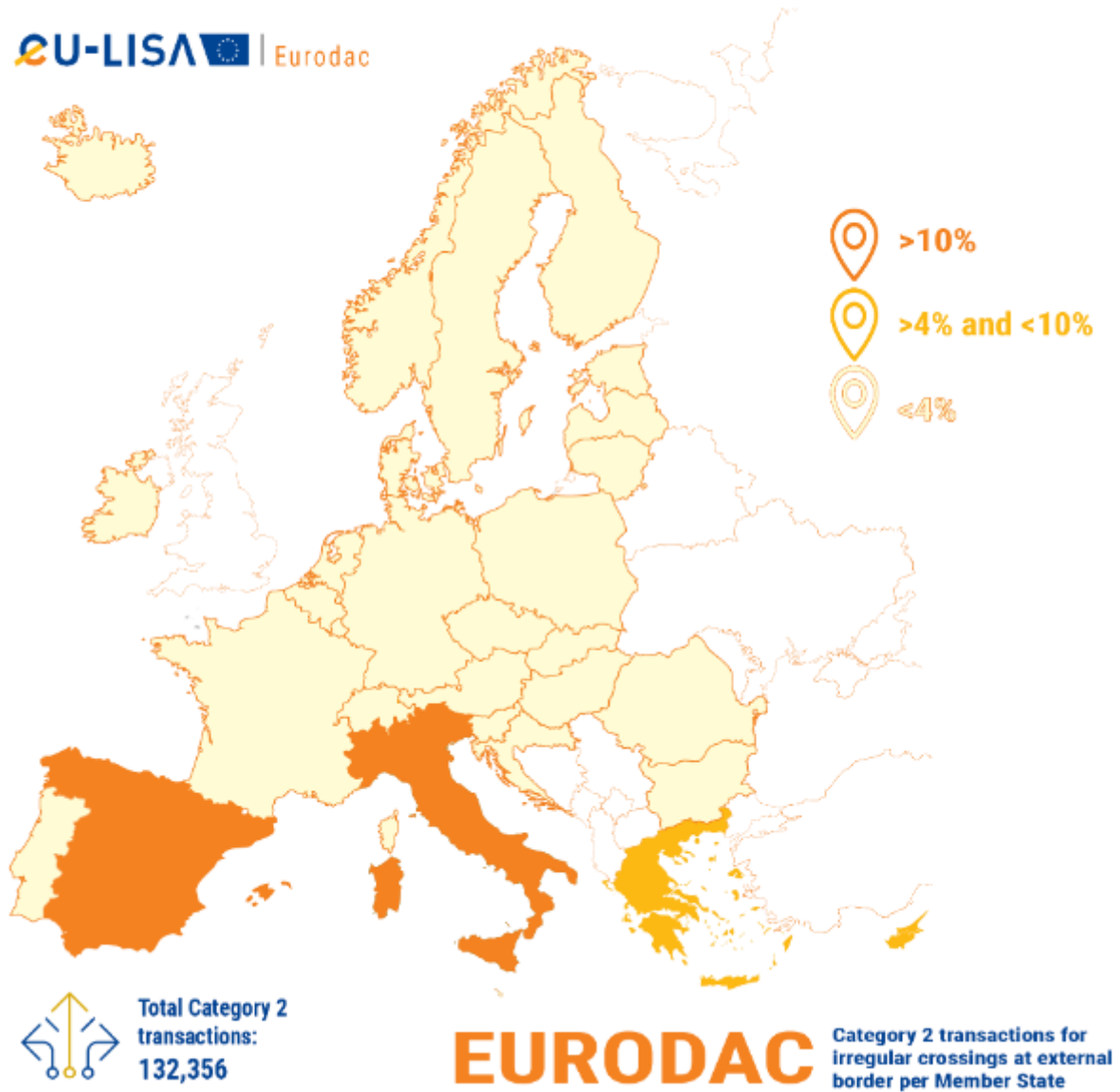


Figure 6: Category 2 – Irregular crossing transactions per Member State in 2021

In relation to Category 2 transactions throughout 2021, countries of first arrivals, such as Italy (49%) and Spain (28%) transmitted the highest number of records to the Central System, as had been the case in the past.



2

HITS GENERATED

2. Hits generated



When a set of fingerprint data is sent to the Central System for search purposes (Category 1, Category 3, Category 4 and 5), the outcome of that search for the authority carrying it out may be either a 'hit' or a 'no hit'.

If the search result is a 'hit', this means that the fingerprint data set sent for comparison matches another data set already stored in the Central System. On the other hand, if the result of that search is a 'no hit', the data set checked against data stored in Eurodac does not match any record that has been stored already.

Furthermore, hits may be either local or foreign. 'Local hits' occur when the Member State authority performing the search receives a 'hit' against a data set previously stored in the Central System by that same Member State. By contrast, a 'foreign hit' represents the positive result of a comparison against a fingerprint data set stored in the system from a Member State that is different from the one executing the search.

Law enforcement searches (Categories 4 and 5) can be carried out either with Criminal Print-to-print Searches (CPS) when the full set of fingerprints is taken directly from the person, or with Mark-to-Print Searches (MPS) when latent fingerprints are sent. For CPS there are hits, whereas for MPS the search returns a number of best matching candidates.

The number of hits returned during 2021 (out of all transactions registered in the Central System), rose to a total of **610,298**. Of these, **200,410** were local hits and **409,888** were foreign hits.

Category 1 hits against Category 1 data sets

When a Category 1 transaction is sent to Eurodac, it is compared to the data already in the system and in parallel, it is stored automatically. The search is performed against Category 1 data sets and Category 2 data sets already stored in Eurodac.

The search against Category 1 data sets reveals whether a third-country national lodging an asylum request in a Member State has already requested international protection in the same or another Member State(s) over the last 10 years.

At the end of 2021, **315,217** Category 1 hits against Category 1 data sets were reported. Of the total, **213,310** were foreign hits and **101,907** were local. A breakdown of the hits per Member State is available in **Table 4 in the Annex**.

The pattern of these hits over the last 6 years clearly follows the trend of Category 1 transactions, see graph below.

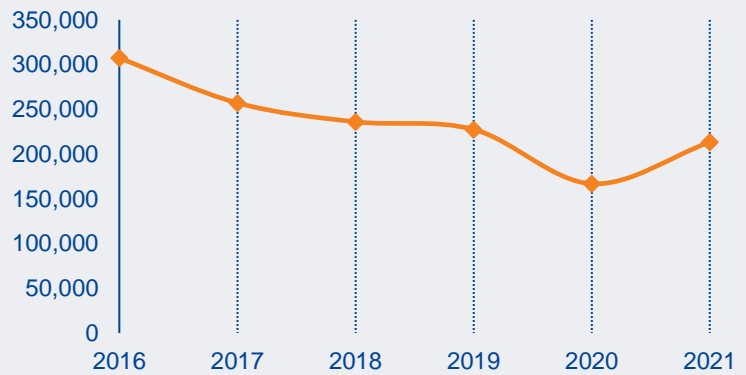


Figure 7: Foreign Category 1 hits against Category 1 data, 2016-2021

Category 1 hits against Category 2 data sets

A Category 1 hit against Category 2 data set occurs when there is a positive result from a search with a fingerprint data set from an asylum applicant against the Category 2 data sets stored in the Eurodac Central System.

This sort of search is performed to confirm whether or not a third-country national lodging an international protection claim in one Member State has been apprehended while irregularly crossing the external border of a Member State over the previous 18 months.

The total number of this category of hits was **93,284** in 2021. Of those, **54,933** were local hits and **38,351** were foreign hits. Detailed information per Member State is available in **Table 5 in the Annex**.

The graph below shows the trend of these types of hits over the last 6 years. Such hits depend on the amount of Category 2 data stored in the system. Following the migration crisis that began in 2015, the amount of Category 2 data stored in the system reached record levels (661,470 data sets in 2016) and thus there was a large number of hits registered in 2016. Since then, the amount of Category 2 data has fallen considerably because these data, and the related hits, are stored for 18 months and then automatically deleted.

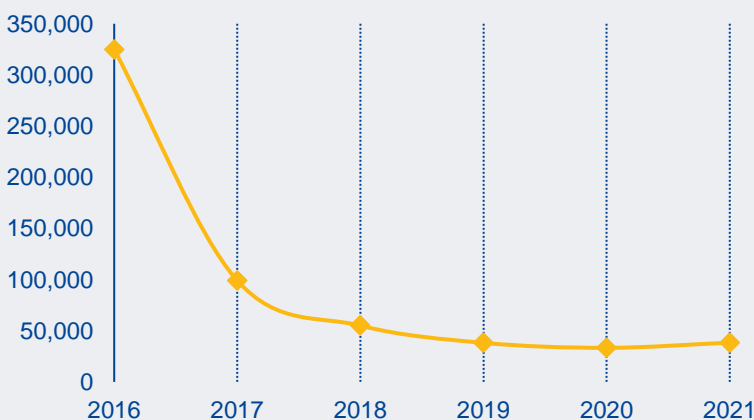


Figure 8: Foreign Category 2 hits against Category 1 data, 2016-2021

Category 3 hits against Category 1 data sets

The Category 3 searches performed against Category 1 data sets stored in Eurodac are to examine whether a third-country national illegally found within the territory of a Member State, had previously requested international protection in the Member State where they had been found staying illegally, or in another Member State.

There were **148,640** hits of Category 3 searches against Category 1 data sets during 2021. Of these, **36,404** were local and **112,236** were foreign. The graph below shows an overview of this type of hits over the last 6 years.

Detailed information of the number of hits per Member State can be found in **Table 6 in the Annex**.

It should be noted that, under Article 17 of the Eurodac Regulation, Member States are not obliged to make use of the Category 3 search and thus not all the Member States make systematic use of this functionality.

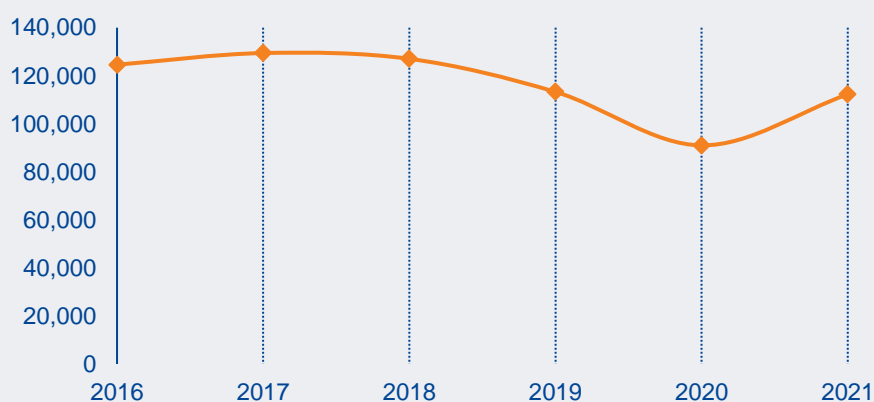


Figure 9: Foreign Category 3 hits against Category 1 data, 2016-2021

Category 4 hits against Category 1 and 2 data sets

These hits give an indication about persons searched for by law enforcement authorities who previously had been recorded in Eurodac, either because they had applied for international protection in the last 10 years or because they had been apprehended during an irregular crossing of the EU+ external borders over the previous 18 months.

In 2021, a total of **80** Category 4 searches resulted in a hit and there were **68** hits against Category 1 and **12** against Category 2 data sets. Of those 68, there were 16 local hits of Category 4 searches against Category 1 records, and the remaining 52 were foreign hits. From the total of 12 Category 4 hits against Category 2 data sets in 2021, 11 were foreign and 1 was local.

Tables 7 and 8 in the Annex indicate the Member States' Category 4 hits against each of the two abovementioned categories of data sets.

Category 1 hits against marked Category 1 and 2 data sets

In 2021, a total of **40,022** searches resulted in a hit either against a **marked data set** to Category 1 or to Category 2. There were **37,120** hits related to Category 1 marked data sets and **2,902** hits related to Category 2 marked data sets.

According to the data, 31,918 hits of Category 1 data sets against marked Category 1 records were foreign, against 5,202 local.

On the other hand, the hits resulting from searches of Category 1 data against marked Category 2 records were 2,897 foreign and 5 local.

The hits generated against marked Category 1 records give an indication of secondary movements of persons who were granted international protection and who subsequently re-applied for international protection in the same or another Member State.

In the Annex (**Tables 9 and 10 in the Annex**), different categories of marked data set hits are presented, with details of total figures per Member State (local or foreign).

Category 3 hits against marked Category 1 data sets

The hits generated against marked Category 1 records by Category 3 searches indicate secondary movements of persons who were granted international protection and who were subsequently found to be staying illegally within the territory of a Member State.

There were a total of **13,055** of Category 3 hits against Category 1 marked data sets. There were **1,942** local hits (persons found within the territory of the same Member State where they had lodged an asylum application), and there were **11,113** foreign hits (persons found in the territory of a different Member State).

In the Annex, there is a breakdown of this data per Member State in **Table 11**.

Rejected data sets

Data sets transmitted to the Central System could be rejected due to poor data quality. Fingerprints that do not have enough quality due to different reasons (for example, errors, poor quality and/or sequence, etc.), are rejected by the Central System and thus are not used for comparison.

During 2021, there were **27,035** rejected data sets.

A breakdown of rejected data sets per Member State is available in the **Annex in Table 12**.

Marked, unmarked, blocked and unblocked data sets

Once an asylum applicant is granted international protection, the Member State granting it is supposed to **mark** the relevant data set in the system. From then on, the mark is stored in the Central System.

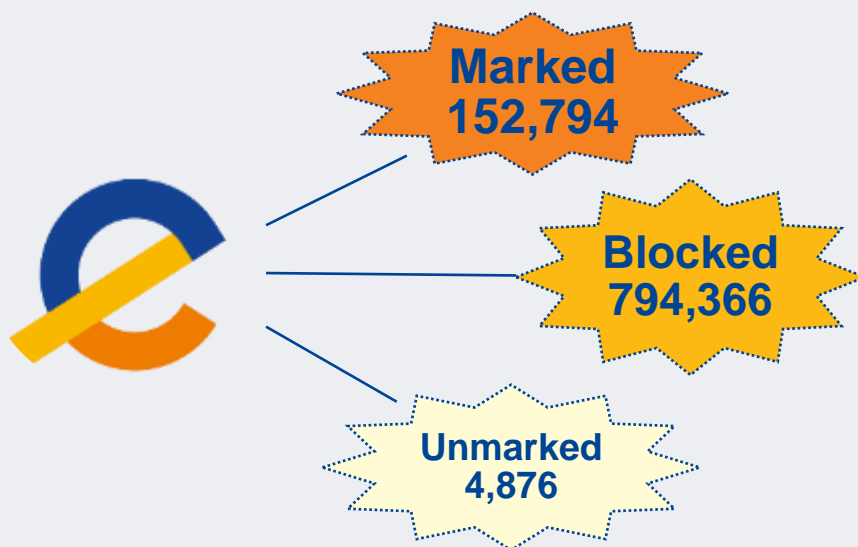
After this first marking, the data sets which are linked to it (Category 1 and/or Category 2), will also be marked by the relevant Member States (the marking following the initiator).

Marked data is to be available for law enforcement searches for a limited period of 3 years after the data subject is granted international protection. Following that period, the data is automatically blocked for comparisons by law enforcement, whilst the data remains available for the authorities responsible for granting asylum until the moment it is erased. **Blocked data** is, therefore, not transmitted as a result of any HIT from the search carried out.

By contrast, if the status of asylum previously granted to an applicant is revoked, has ended or the renewal is refused, the Member State responsible for the data set is supposed to **unmark** the data concerning that person in the Central System (and the unmarking following the initiator should take place as well).

In **Tables 13, 14 and 15 of the Annex** there is a breakdown of marked, unmarked and blocked data sets per Member State.

Number of data sets per type in 2021





3

ANNEXES

3. Annexes

Data sets transmitted in 2021⁶

Table 1: Number of data sets transmitted per Member State in 2021

Member State	Category 1 data	Category 2 data	Category 3 data	Category 4 data	Category 5 data	Total
AT	34,068	61	12,465	20		46,614
BE	21,431		32,904			54,335
BG	10,215	564	2,539			13,318
CH	10,537		10,584			21,121
CY	11,967	10,019	75	26		22,087
CZ	1,222	9	3,673			4,904
DE	124,541	1,237	58,099	269		184,146
DK	1,679	4	2,739	15		4,437
EE	50		1,048			1,098
ES	50,049	37,153	1,359	5		88,566
FI	2,107	1	118			2,226
FR	94,758	632	16,109	34		111,533
GR	23,622	12,005	19,131	20		54,778
HR	1,863	1,815	43			3,721
HU	37	105	5,478	3		5,623
IE	4,142	2				4,144
IS	621	3	44			668
IT	55,167	64,548	20,579			140,294
LI	65		1			66
LT	3,670	72	724			4,466
LU	995	2	1,736			2,733
LV	433	1	5			439
MT	1,111	725	75			1,911
NL	25,360	837	10,403	31		36,631
NO	1,598	12	1,978			3,588
PL	5,144	608	2,688	2		8,442
PT	1,243	1	203			1,447
RO	8,957	1,909	1,423	19		12,308
SE	9,434	16	499	2		9,951
SI	4,254	2	3,661			7,917
SK	356	13	1,577			1,946
Europol					20	20
Total	510,696	132,356	211,960	446	20	855,478

Table 2: Number of Category 4 data sets transmitted per Member State in 2021

Member State	Category 4 CPS	Category 4 MPS	Total
AT	20		20
CY	3	23	26
DE	36	233	269
DK	8	7	15
ES	5		5
FR	34		34
GR	3	17	20
HU	3		3
NL		31	31
PL	2		2
RO	8	11	19
SE	2		2
Total	124	322	446

Table 3: Number of Category 5 data sets transmitted by Europol in 2021

Member State	Category 5 CPS	Category 5 MPS	Total
Europol	11	9	20
Total	11	9	20

⁶ Categories 4 and 5 are of two types: Criminal Print-to-print Searches (CPS) when the full set of fingerprints is taken directly from the person, or Mark-to-Print Searches (MPS) when the fingerprints sent are latent fingerprints

Category 1 hits against Category 1 data sets in 2021⁷

Table 4: Number of Category 1 hits against Category 1 data sets in per Member State in 2021

Member State	AT	BE	BG	CH	CY	CZ	DE	DK	EE	ES	FI	FR	GR	HR	HU	IE	IS	IT	LI	LT	LU	LV	MT	NL	NO	PL	PT	RO	SE	SI	SK	Local hits	Foreign hits	Total	
AT	2,250	137	3,388	315	31	20	1,300	85	3	21	42	515	2,985	64	297	0	15	282	9	5	22	6	6	311	39	58	4	2,050	140	83	125	2,250	12,358	14,608	
BE	1,768	10,921	1,394	536	19	20	3,400	188	4	354	51	3,111	1,696	86	287	5	31	1,115	6	8	125	8	89	1,202	89	166	38	1,153	513	265	33	10,921	17,760	28,681	
BG	33	7	96	12	0	1	73	1	0	0	7	7	61	0	18	0	0	5	0	0	1	0	0	13	3	2	0	10	11	1	0	96	266	362	
CH	831	172	283	1,184	3	10	1,359	99	1	73	24	565	1,728	127	122	1	3	421	20	14	57	10	8	584	35	58	12	316	164	273	21	1,184	7,394	8,578	
CY	10	1	1	2	138	1	25	1	0	1	1	0	4	0	5	1	0	9	0	1	0	0	0	2	0	1	0	1	8	0	0	138	75	213	
CZ	16	17	1	13	1	316	106	1	0	0	1	24	7	0	2	0	0	6	1	2	3	0	0	15	1	2	2	10	27	0	1	316	259	575	
DE	3,588	1,704	2,505	1,884	67	135	27,777	779	14	713	351	6,040	26,387	962	1,754	27	61	4,004	22	281	178	152	208	3,232	366	1,317	103	3,117	2,458	1,341	53	27,777	63,803	91,580	
DK	67	52	28	76	0	0	293	219	0	11	41	76	65	1	8	2	4	69	0	3	14	1	4	120	39	15	1	25	211	6	0	219	1,232	1,451	
EE	1	1	0	1	0	0	2	1	0	0	2	0	1	0	0	0	0	0	0	0	1	0	0	1	2	1	0	0	1	0	0	0	0	15	15
ES	114	104	12	118	5	12	647	42	1	1,833	14	562	326	7	91	6	7	1,815	2	2	14	0	84	150	18	19	13	15	98	62	3	1,833	4,363	6,196	
FI	25	14	11	19	4	3	196	83	4	4	1,967	52	214	3	32	0	6	53	0	2	3	6	5	57	31	6	1	9	170	8	0	1,967	1,021	2,988	
FR	5,135	2,658	2,899	1,894	56	107	14,013	443	4	1,035	276	26,670	6,328	287	1,483	19	34	10,874	7	68	242	45	586	1,754	404	533	172	2,991	2,077	1,005	59	26,670	57,488	84,158	
GR	33	23	23	17	6	3	268	21	0	4	21	79	4,752	5	49	0	3	37	0	1	3	0	0	37	19	5	2	9	40	2	0	4,752	710	5,462	
HR	13	4	48	4	0	0	29	2	0	0	4	2	999	26	10	0	0	1	0	0	1	0	0	6	5	3	0	15	10	10	0	26	1,166	1,192	
HU	2	0	2	0	0	0	2	1	0	0	0	0	0	0	2	0	0	0	0	0	0	0	0	0	0	1	0	6	0	0	0	2	14	16	
IE	180	112	89	57	11	3	613	142	1	25	22	191	683	3	25	510	11	242	2	3	7	1	53	78	21	3	4	108	243	10	1	510	2,944	3,454	
IS	7	11	2	7	2	2	43	12	0	0	6	6	124	0	2	3	23	26	0	0	1	0	0	18	7	0	0	0	20	0	0	23	299	322	
IT	1,670	310	370	683	24	45	3,851	126	1	177	168	2,538	1,949	90	582	5	10	12,205	1	4	27	7	94	335	88	27	14	569	600	504	17	12,205	14,886	27,091	
LI	18	3	2	27	0	1	40	2	0	1	1	13	9	0	2	0	0	5	10	0	6	0	0	17	0	3	1	1	4	3	0	10	159	169	
LT	23	7	6	4	0	1	113	6	0	1	56	8	36	2	5	0	0	15	0	187	1	0	3	15	10	9	0	9	32	0	1	187	363	550	
LU	14	37	2	48	0	0	114	6	0	9	6	79	63	5	10	0	0	68	2	0	40	1	6	66	6	4	2	8	11	9	0	40	576	616	
LV	4	2	4	2	0	5	26	3	0	1	20	4	5	0	1	2	0	1	0	2	0	2	0	4	2	5	0	0	8	0	0	2	101	103	
MT	7	9	12	6	0	0	42	5	0	0	0	19	51	0	1	0	0	85	0	0	0	0	0	71	3	2	3	0	2	8	0	0	71	255	326
NL	912	598	178	1,045	66	40	3,935	374	2	237	79	1,237	1,894	86	167	10	21	1,546	9	13	136	5	69	5,125	127	99	39	243	522	166	18	5,125	13,873	18,998	
NO	65	5	42	11	4	0	54	46	0	5	9	19	125	2	2	0	0	16	0	8	0	0	7	10	64	7	0	28	73	1	1	64	540	604	
PL	58	27	59	26	0	14	316	21	0	1	24	40	56	0	3	0	1	6	1	27	4	5	0	36	13	1,365	0	120	49	3	0	1,365	910	2,275	
PT	18	19	1	29	0	6	148	1	0	15	0	94	124	0	4	0	0	153	2	0	6	0	15	19	4	0	20	1	11	5	0	20	675	695	
RO	134	22	1,640	21	1	3	174	3	1	2	13	37	810	3	30	0	2	25	0	0	0	0	1	8	11	50	0	641	14	5	2	641	3,012	3,653	
SE	150	69	55	138	9	5	721	329	1	34	104	172	599	12	136	3	13	239	1	6	14	7	18	208	146	26	1	60	3,417	23	3	3,417	3,302	6,719	
SI	41	11	211	16	0	0	118	19	0	5	9	34	1,721	940	30	0	0	26	2	0	2	0	0	34	10	1	1	125	25	27	3	27	3,384	3,411	
SK	24	3	11	6	0	1	7	1	0	0	0	0	16	0	2	1	0	0	0	0	0	0	0	2	1	0	0	28	4	0	49	49	107	156	
Total	17,211	17,060	13,375	8,201	447	754	59,805	3,062	37	4,562	3,319	42,194	53,818	2,711	5,162	595	245	33,349	97	637	908	256	1,327	13,462	1,563	3,789	430	11,670	10,969	3,812	390	101,907	213,310	315,217	

⁷ The Member States in column one have sent cases which have produced hits against the data of the Member States listed across the top of the table. Local hits are produced when the two data sets generating the hit are from the same country. The number of local hits depends on the Member State settings when performing a search in Eurodac. Member States have the option to exclude their own searches, which will filter out local hits from the results.

Category 1 hits against Category 2 data sets in 2021⁸

Table 5: Number of Category 1 hits against Category 2 data sets per Member State in 2021

Member State	AT	BG	CY	DE	ES	FI	FR	GR	HR	HU	IE	IS	IT	LT	LU	LV	MT	NL	NO	PL	PT	RO	SE	SI	SK	Local hits	Foreign hits	Total
AT	7	108	3	2	23	0	1	1,846	104	19	0	0	229	0	0	0	4	0	0	1	0	296	0	0	0	7	2,636	2,643
BE	0	27	4	7	185	0	12	453	54	3	1	0	1,228	0	0	0	58	4	0	3	0	186	0	0	0	0	2,225	2,225
BG	0	518	0	0	0	0	0	14	0	0	0	0	0	0	0	0	0	0	0	0	0	1	0	0	0	518	15	533
CH	0	11	0	5	314	0	0	883	117	0	0	0	587	0	0	0	1	1	0	3	0	40	0	0	1	0	1,963	1,963
CY	0	0	9,762	0	0	0	0	2	0	0	0	0	0	0	0	0	0	0	0	0	0	0	0	0	0	9,762	2	9,764
CZ	0	0	0	0	2	0	0	0	1	0	0	0	1	0	0	0	0	0	0	0	0	1	0	0	0	0	5	5
DE	1	108	3	388	1,147	0	22	5,131	839	26	0	0	4,010	0	0	0	113	70	0	144	0	430	0	0	2	388	12,046	12,434
DK	0	1	0	1	15	0	0	29	1	2	0	0	38	0	0	0	3	0	0	0	0	4	1	0	0	0	95	95
EE	0	0	0	0	0	0	0	3	0	0	0	0	0	0	0	0	0	0	0	0	0	0	0	0	0	0	3	3
ES	0	1	1	0	6,477	0	2	8	5	0	0	0	156	0	0	0	69	1	0	1	0	3	0	0	0	6,477	247	6,724
FI	0	0	4	1	7	1	0	81	6	0	0	0	30	0	0	0	2	0	0	0	0	2	0	0	0	1	133	134
FR	0	68	17	9	3,301	0	457	1,133	336	2	0	0	5,764	0	0	0	210	1	0	21	0	538	0	0	0	457	11,400	11,857
GR	0	1	0	0	0	0	0	11,635	0	0	0	0	2	0	0	0	0	0	0	0	0	0	0	0	0	11,635	3	11,638
HR	0	1	0	0	0	0	0	170	1,098	0	0	0	1	0	0	0	0	0	0	0	0	4	0	0	0	1,098	176	1,274
HU	0	0	0	0	0	0	0	0	0	0	0	0	0	0	0	0	0	0	0	0	0	1	0	0	0	0	1	1
IE	0	1	0	0	11	0	2	59	0	3	1	0	41	0	0	0	19	1	0	1	0	12	0	0	0	1	150	151
IS	0	0	0	0	0	0	0	12	0	0	0	1	7	0	0	0	0	0	0	0	0	0	0	0	0	1	19	20
IT	0	5	12	1	399	0	0	202	162	1	0	0	22,021	0	0	0	27	0	0	1	0	84	0	0	0	22,021	894	22,915
LI	0	0	0	0	1	0	0	3	0	0	0	0	0	0	0	0	0	0	0	0	0	0	0	0	0	0	4	4
LT	0	0	0	0	0	0	0	4	0	0	0	0	12	7	0	0	3	0	0	4	0	4	0	0	0	7	27	34
LU	0	0	0	0	13	0	0	31	1	0	0	0	114	0	1	0	9	0	0	1	0	5	0	0	0	1	174	175
LV	0	0	0	0	0	0	0	0	0	0	0	0	0	0	0	1	0	0	0	0	0	0	0	0	0	1	0	1
MT	0	0	0	0	0	0	0	8	0	0	0	0	4	0	0	0	746	0	0	0	0	0	0	0	0	746	12	758
NL	0	9	3	6	604	0	13	1,621	40	6	0	0	1,489	0	0	0	50	36	0	16	3	47	0	0	1	36	3,908	3,944
NO	0	0	3	0	3	0	0	105	3	1	0	0	39	0	0	0	4	0	1	0	0	7	0	0	0	1	165	166
PL	0	1	0	0	3	0	0	24	2	0	0	0	0	0	0	0	0	0	0	259	0	26	0	0	0	259	56	315
PT	0	0	0	0	16	0	0	18	0	0	0	0	33	0	0	0	13	0	0	0	5	0	0	0	0	5	80	85
RO	0	46	1	0	0	0	0	348	47	1	0	0	9	0	0	0	0	0	0	2	0	1,500	0	0	0	1,500	454	1,954
SE	0	1	3	3	9	0	0	289	13	0	0	1	94	0	0	0	2	1	0	2	0	9	7	0	0	7	427	434
SI	0	5	0	0	0	0	0	194	784	0	0	0	7	0	0	0	0	0	0	0	0	30	0	3	0	3	1,020	1,023
SK	0	2	0	0	0	0	0	7	0	0	0	0	0	0	0	0	0	0	0	0	0	2	0	0	1	1	11	12
Total	8	914	9,816	423	12,530	1	509	24,313	3,613	64	2	2	35,916	7	1	1	1,333	115	1	459	8	3,232	8	3	5	54,933	38,351	93,284

⁸ The Member States in column one have sent cases which have produced hits against the data of the Member States listed across the top of the table. Local hits are produced when the two data sets generating the hit are from the same country. The number of local hits depends on the Member State settings when performing a search in Eurodac. Member States have the option to exclude their own searches, which will filter out local hits from the results.

Category 3 hits against Category 1 data sets in 2021⁹

Table 6: Number of Category 3 hits against Category 1 data sets per Member State in 2021

Member State	AT	BE	BG	CH	CY	CZ	DE	DK	EE	ES	FI	FR	GR	HR	HU	IE	IS	IT	LI	LT	LU	LV	MT	NL	NO	PL	PT	RO	SE	SI	SK	Local hits	Foreign hits	Total	
AT	1,583	89	407	364	4	22	1,287	74	0	35	34	351	861	51	223	2	3	984	1	1	28	1	8	259	37	21	7	660	149	73	103	1,583	6,139	7,722	
BE	1,439	7,232	234	2,536	5	28	7,851	983	0	700	91	2,554	935	157	447	27	14	1,662	8	11	349	16	140	6,827	292	72	32	566	1,190	500	41	7,232	29,707	36,939	
BG	10	2	53	8	0	0	30	1	0	0	4	91	0	6	2	0	4	0	0	1	0	0	3	0	1	0	6	4	0	0	53	177	230		
CH	990	268	141	3,121	3	17	2,567	217	2	154	39	1,221	325	39	214	8	5	1,316	14	12	107	5	11	1,135	81	35	22	181	291	148	26	3,121	9,594	12,715	
CY	0	0	0	0	1	0	0	0	0	0	0	0	0	0	0	0	0	0	0	0	0	0	0	0	0	0	0	0	0	0	1	0	1		
CZ	50	10	167	20	0	187	114	4	0	6	2	17	92	0	15	0	3	28	0	2	7	0	1	22	9	13	1	508	19	0	14	187	1,124	1,311	
DE	2,071	694	1,392	1,133	31	73	8,201	509	11	311	255	2,619	7,620	218	445	17	34	2,242	11	93	128	71	63	1,826	212	579	56	2,228	1,520	472	40	8,201	26,974	35,175	
DK	70	38	17	70	7	1	338	808	0	7	41	79	67	5	33	1	7	164	2	0	7	1	0	86	54	12	1	8	413	5	4	808	1,538	2,346	
EE	1	0	0	0	1	0	8	1	13	0	13	2	1	0	0	0	1	4	0	1	1	4	0	2	0	2	0	1	9	0	0	13	52	65	
ES	7	26	0	11	0	0	56	2	1	433	0	30	11	0	4	0	1	50	1	0	4	6	15	37	7	0	3	0	12	4	0	433	288	721	
FI	9	2	1	7	0	0	29	12	0	26	6	7	1	4	0	1	10	0	2	0	0	1	9	11	0	0	0	37	2	0	26	151	177		
FR	780	337	304	751	4	7	2,540	145	1	266	31	4,540	458	48	315	8	3	2,057	9	5	93	4	66	987	54	39	23	284	245	260	24	4,540	10,148	14,688	
GR	34	20	23	19	8	2	263	14	0	4	20	81	3,676	3	51	0	2	31	0	1	3	0	0	39	8	9	1	11	30	2	0	3,676	679	4,355	
HR	0	0	3	0	0	0	1	0	0	0	0	0	22	5	1	0	0	0	0	0	0	0	0	0	1	0	0	7	0	1	0	5	36	41	
HU	78	37	330	24	1	15	385	13	0	3	8	120	324	2	262	0	12	34	1	0	3	0	2	46	13	3	0	624	53	3	2	262	2,136	2,398	
IS	0	0	0	0	0	0	0	0	0	0	2	0	1	0	0	0	3	0	0	0	0	0	0	0	0	0	0	0	1	0	0	3	4	7	
IT	1,282	116	520	357	10	20	1,609	70	0	64	39	895	2,183	247	262	5	3	2,164	4	4	27	3	58	296	37	12	8	538	218	474	22	2,164	9,383	11,547	
LT	5	0	3	0	0	0	24	4	0	0	17	0	7	1	4	0	0	0	0	0	120	0	0	5	1	0	0	1	5	0	0	120	77	197	
LU	66	139	14	223	2	1	612	74	0	26	17	308	81	6	25	0	2	209	4	2	153	1	14	450	25	11	3	15	77	25	0	153	2,432	2,585	
LV	2	1	0	3	0	4	5	2	0	0	0	3	0	0	0	0	0	0	0	0	0	0	0	2	0	2	0	0	3	0	0	0	2	27	27
MT	1	0	1	4	0	0	10	0	0	0	0	2	15	0	1	0	0	17	0	0	0	0	0	20	0	1	0	0	2	0	0	20	54	74	
NL	333	318	123	476	5	7	1,694	178	1	169	28	493	827	19	107	9	4	436	6	2	62	3	5	2,265	42	13	8	86	252	70	7	2,265	5,783	8,048	
NO	39	9	23	33	0	2	116	37	0	9	11	39	63	0	12	0	0	82	0	0	3	0	3	25	230	6	0	13	143	3	0	230	671	901	
PL	22	14	82	26	0	13	273	21	0	2	15	44	95	1	13	0	1	16	3	10	5	8	0	39	10	164	0	144	41	1	0	164	899	1,063	
PT	14	0	3	11	0	0	36	2	0	6	0	12	89	0	3	0	0	26	0	0	0	0	2	7	0	0	11	1	8	0	0	11	220	231	
RO	134	2	83	17	0	2	88	6	0	0	2	40	157	0	10	0	0	6	0	0	1	0	0	10	5	42	0	952	7	3	2	952	617	1,569	
SE	9	9	2	9	0	0	68	35	0	2	12	11	17	0	5	0	1	50	0	2	2	2	2	18	7	3	0	3	147	1	0	147	270	417	
SI	46	9	180	24	1	0	122	3	0	7	6	46	855	703	53	0	2	37	2	0	3	0	0	22	5	0	0	101	15	20	1	20	2,243	2,263	
SK	15	0	162	7	0	2	32	2	0	0	1	4	113	0	10	0	0	6	0	0	0	0	0	6	1	4	0	441	6	1	14	14	813	827	
Total	9,090	9,372	4,268	9,254	83	403	28,359	3,217	29	2,204	714	13,521	18,993	1,506	2,525	79	102	11,635	66	268	987	125	411	14,423	1,143	1,043	176	7,379	4,897	2,068	300	36,404	112,236	148,640	

⁹ The Member States in column one have sent cases which have produced hits against the data of the Member States listed across the top of the table. Local hits are produced when the two data sets generating the hit are from the same country. The number of local hits depends on the Member State settings when performing a search in Eurodac. Member States have the option to exclude their own searches, which will filter out local hits from the results.

Category 4 hits against Category 1 and 2 data sets in 2021

Table 7: Number of Category 4 hits against Category 1 data sets per Member State in 2021

Member State	AT1	BE1	BG1	DE1	FR1	GR1	HU1	IT1	NL1	PL1	RO1	SE1	Local hits	Foreign hits	Total
AT	6	0	0	0	0	0	0	1	0	0	0	1	6	2	8
DE	5	1	0	0	2	0	0	9	8	1	0	1		27	27
ES	0	0	0	0	1	0	0	1	0	0	0	0		2	2
FR	0	0	1	1	1	1	1	7	0	0	0	0	1	11	12
HU	1	0	0	1	0	0	3	0	0	0	0	0	3	2	5
RO	0	0	3	0	0	3	0	2	0	0	6	0	6	8	14
Total	12	1	4	2	4	4	4	20	8	1	6	2	16	52	68

Table 8: Number of Category 4 hits against Category 2 data sets per Member State in 2021

Member State	DE2	IT2	RO2	Local hits	Foreign hits	Total
AT	1	0	0		1	1
FR	0	10	0		10	10
RO	0	0	1	1		1
Total	1	10	1	1	11	12

Category 1 hits against marked Category 1 data sets in 2021

Table 9: Number of Category 1 hits against marked Category 1 data sets per Member State in 2021¹⁰

Member State	AT	BE	BG	CH	CY	CZ	DE	DK	EE	ES	FI	FR	GR	HR	HU	IE	IS	IT	LT	LU	LV	MT	NL	NO	PL	PT	RO	SE	SI	SK	Local hits	Foreign hits	Total	
AT	123	5	16	13	7	1	57	6		5	2	11	341	16	12			8		1				4	1			20	11	16		123	553	676
BE	29	612	49	39	2	1	260	27	1	50	2	127	856	8	10			36		1	1	4	83	7	3	1	27	38	4	2	612	1,680	2,292	
BG	4		3				5						4		2									3				1			3	19	22	
CH	17	3	5	95	1		78	3		2		23	444		11		1	8		3			17	1	1		7	6	5		95	636	731	
CY				1	1		2								1																1	6	7	
CZ						3	1						1															1			3	3	6	
DE	194	319	505	112	15	8	3,533	127	5	176	38	222	18,397	57	180	5	21	75	9	9	10	19	222	51	18	11	235	198	47	6	3,533	21,291	24,824	
DK	4			5			24	21			1	2	10					5					5	4			2	12	1		21	75	96	
ES	4	2		2			21	3		2		3	6		7			7					4		1			3	1		2	64	66	
FI	3	3	3				5	1			20	1	80		1		1	5			1		3	4			5	4			20	120	140	
FR	70	169	20	87	7		477	21		126	8	409	2,052	7	31			117		6	3	4	41	15	8	1	51	61	5	3	409	3,392	3,801	
GR	2		2				20	3				1	23		3								1					3			23	35	58	
HR	3												44		2																2	47	49	
HU								1																							0	1	1	
IE	61	28	47	13	7	1	342	69		16	10	36	557		8	9	3	65	1	3			9	28	2		62	50			9	1,418	1,427	
IS	1	10			2		26	3			2	3	112				3							9	1			7			3	176	179	
IT	20	4	12	15		1	100	2	1	3	2	47	39		13	1		44					10	3			9	9	4	1	44	298	342	
LI				1			1			1			8															1					12	12
LT							15						4						2								1				2	20	22	
LU		2		7			8			2	1	6	13		1			6			2	1		2				3			2	52	54	
MT	1	2	4				4						18					1					6				2				6	32	38	
NL	32	54	28	33		29	261	46		14	6	60	715	5	13	2	2	28		1			191	7	3		13	36	3	1	191	1,392	1,583	
NO		1			1		3			1		4	33					1	1						6	1	2	2			6	50	56	
PL		2					12					2	1		2					1	1		1			8					8	22	30	
PT							2					1	7										3								0	13	13	
RO	4						11				1		37										2				2	2			2	57	59	
SE	4	5	8	9	1		58	12		2	3	15	171	1	2	1		12				1	1	16	4	2	1	79	2		79	331	410	
SI	3		2	3			6				1	3	54	41	1								3				2	1	2		2	120	122	
SK							2						1																	1	1	3	4	
Total	579	1,221	704	435	73	15	5,334	345	7	400	97	976	24,028	137	298	18	45	418	14	29	17	46	647	106	45	13	441	528	90	14	5,202	31,918	37,120	

¹⁰ Member States in the column on the left-hand side have performed a certain number of Category 1 searches which have produced hits against the marked data sets of Member States listed across the top. Local hits are generated when the two data sets generating the hit are from the same country.

Table 10: Number of Category 1 hits against marked Category 2 data sets per Member State in 2021

Member State	BG	ES	GR	HR	HU	IT	NL	RO	Local hits	Foreign hits	Total
AT			82	14				4		100	100
BE			68					1		69	69
BG			1							1	1
CH	1	1	68	1						71	71
DE	24	1	1,989	31	1	1	3	20		2,070	2,070
DK								2		2	2
FI			15							15	15
FR			333					3		336	336
GR			3						3		3
HR			19	2					2	19	21
IE	1		33		1		1	7		43	43
IS			5							5	5
IT			5					1		6	6
LI			1							1	1
LU			2							2	2
MT			1							1	1
NL			53	2		1		3		59	59
NO			1							1	1
RO			14							14	14
SE			28	1				2		31	31
SI			17	33						50	50
SK			1							1	1
Total	26	2	2,739	84	2	2	4	43	5	2,897	2,902

Table 11: Number of Category 3 hits against marked Category 1 data sets per Member State in 2021¹¹

Member State	AT	BE	BG	CH	CY	CZ	DE	DK	EE	ES	FI	FR	GR	HR	HU	IE	IS	IT	LT	LU	LV	MT	NL	NO	PL	PT	RO	SE	SI	SK	Local hits	Foreign hits	Total
AT	74	8	33	21		4	117	1		1	7	40	336	6	20			14					29	2	2		8	17	3		74	669	743
BE	33	331	16	62		1	578	16		35	6	144	191	6	11	2		163		5	9	3	162	8	3		19	56	2	7	331	1,538	1,869
BG	1						4						3																			8	8
CH	17	20	3	147	1		127	6		4	1	47	50	1	9		2	17	2	5			26	3	2		3	10	5	1		509	509
CZ	3	1	3	2		2	14	1				1	3		2			3		2			4				3	1			2	43	45
DE	99	93	72	69	6		1,072	41	4	23	10	147	5,055	5	47	1	4	51	2	4	1	3	90	26	8	3	46	75	11	4	1,072	6,000	7,072
DK	4	4	1	4			43	77		1		8	28		7		1	1					6	3			1	20	1		77	133	210
EE											3																	1				4	4
ES		7		3			24	1		33		1	2					1					14	4				3			33	60	93
FI	2						1				7		2		1													2			7	8	15
FR	3	21	1	16	1		113	9		13	1	94	63	1	5	1		19		1	1	1	10	1			4	4	1		94	290	384
GR	5	1	2	2			24	3			1	2	36		6								2					3			36	51	87
HU	9	2	3	3			55	1			4	8	17		46								3	2			8	7			46	122	168
IT	21	1	2	12	1		30	1		2		10	61	9	7			13					5	2			3	1			13	168	181
LT							1												1												1	1	2
LU	1	7	1	12	1		59	7		6	3	21	20		2			20	1	2	1		20	4	1			11			2	198	200
MT	1						4						2									1									1	7	8
NL	18	21	5	14	2		108	7		5	3	29	651	1	9			20					97	2		1	2	22			97	920	1,017
NO	1	1	2	1			19	2		1	1	5	29		1			3					2	42				14			42	82	124
PL	1		2	3			38	4			1	3	12		5												5	2				76	76
PT													3																			5	5
RO			2				1	1					7														9	1			9	12	21
SE	2						6	2			1	1	14		1			1					3	1				5			5	32	37
SI	8	4	6	5	1		19				3	6	47	35	17					2			7				4	3				167	167
SK			1				1						5														3					10	10
Total	303	522	155	376	13	7	2,458	180	4	124	52	567	6,637	64	196	4	7	326	6	21	12	8	480	100	16	4	118	260	23	12	1,942	11,113	13,055

¹¹ Member States in the column on the left-hand side have sent a certain number of Category 3 searches which have produced hits against marked data sets (marked Category 1) of the Member States listed across the top. Local hits are produced when the two data sets generating the hit are from the same country.

Rejected data sets in 2021

Table 12: Number of rejected data sets per Member State in 2021

Member State	Data sets rejected
AT	241
BE	246
BG	58
CH	137
CY	324
CZ	35
DE	3,184
DK	53
EE	2
ES	6,058
FI	145
FR	12,576
GR	593
HR	111
HU	7
IE	131
IS	18
IT	1,422
LI	3
LT	53
LU	12
LV	21
MT	27
NL	887
NO	19
PL	227
PT	42
RO	61
SE	310
SI	26
SK	6
Total	27,035

Marked, unmarked and blocked and data sets in 2021

Table 13: Number of marked data sets per Member State in 2021

Table 14: Number of unmarked data sets per Member State in 2021

Table 15: Number of blocked data sets per Member State in 2021

Member State	Number of marking as initiator	Number of marking following the initiator	Total
AT	9,709	2,884	12,593
BE		2,370	2,370
BG	1,042	1,915	2,957
CH	3,529	1,293	4,822
CY	1	41	42
CZ	207	57	264
DE	24,277	28,181	52,458
DK	511	735	1,246
EE	9		9
ES	4,589	535	5,124
FI	1,438	989	2,427
FR	21,346	6,043	27,389
GR	7,888	10,065	17,953
HR	26	370	396
HU		2,500	2,500
IE	390	1,100	1,490
IS		121	121
IT	15	3,948	3,963
LT		34	34
LU	979		979
LV	74	7	81
MT	482	700	1,182
NL	1	1,619	1,620
NO	917	651	1,568
PL	770	358	1,128
PT		55	55
RO	643	693	1,336
SE	3,126	3,066	6,192
SI	20	400	420
SK	35	40	75
Total	82,024	70,770	152,794

Member State	Number of unmarking as initiator	Number of unmarking following the initiator	Total
AT	531	50	581
BE	2	40	42
BG		20	20
CH	1,915	62	1,977
CY	2	1	3
DE	1,320	257	1,577
DK	48	23	71
ES	4	11	15
FI	20	8	28
FR	2	66	68
GR	5	49	54
HR	2	1	3
HU		129	129
IT		70	70
LT		1	1
MT	3	3	6
NL	2	64	66
NO	15	14	29
PL	5	10	15
PT		3	3
RO		5	5
SE	62	33	95
SI	2	2	4
SK	13	1	14
Total	3,953	923	4,876

Member State	Blocked records for Law enforcement since 01/01/2021
AT	51,489
BE	29,647
BG	12,108
CY	1,463
CZ	488
DE	400,332
DK	22,790
EE	119
ES	6,101
FI	7,202
FR	67,791
GR	23,551
HR	322
HU	36,853
IE	1,394
IT	15,422
LT	402
LU	574
LV	316
MT	609
NL	43,812
PL	2,504
PT	186
RO	2,786
SE	65,472
SI	421
SK	212
Total	794,366



Publications Office
of the European Union

Manuscript completed in June 2022

Neither eu-LISA nor any person acting on behalf of eu-LISA is responsible for the use that might be made of the following information.

Luxembourg: Publications Office of the European Union, 2022

ISBN 978-92-95227-12-5

ISSN 2467-074X

doi:10.2857/455590

Catalogue number: EL-AF-22-001-EN-N

© eu-LISA, 2022

Reproduction is authorised provided the source is acknowledged.

For any use or reproduction of elements that are not owned by eu-LISA, permission may need to be sought directly from the relevant right holders.

www.eulisa.europa.eu